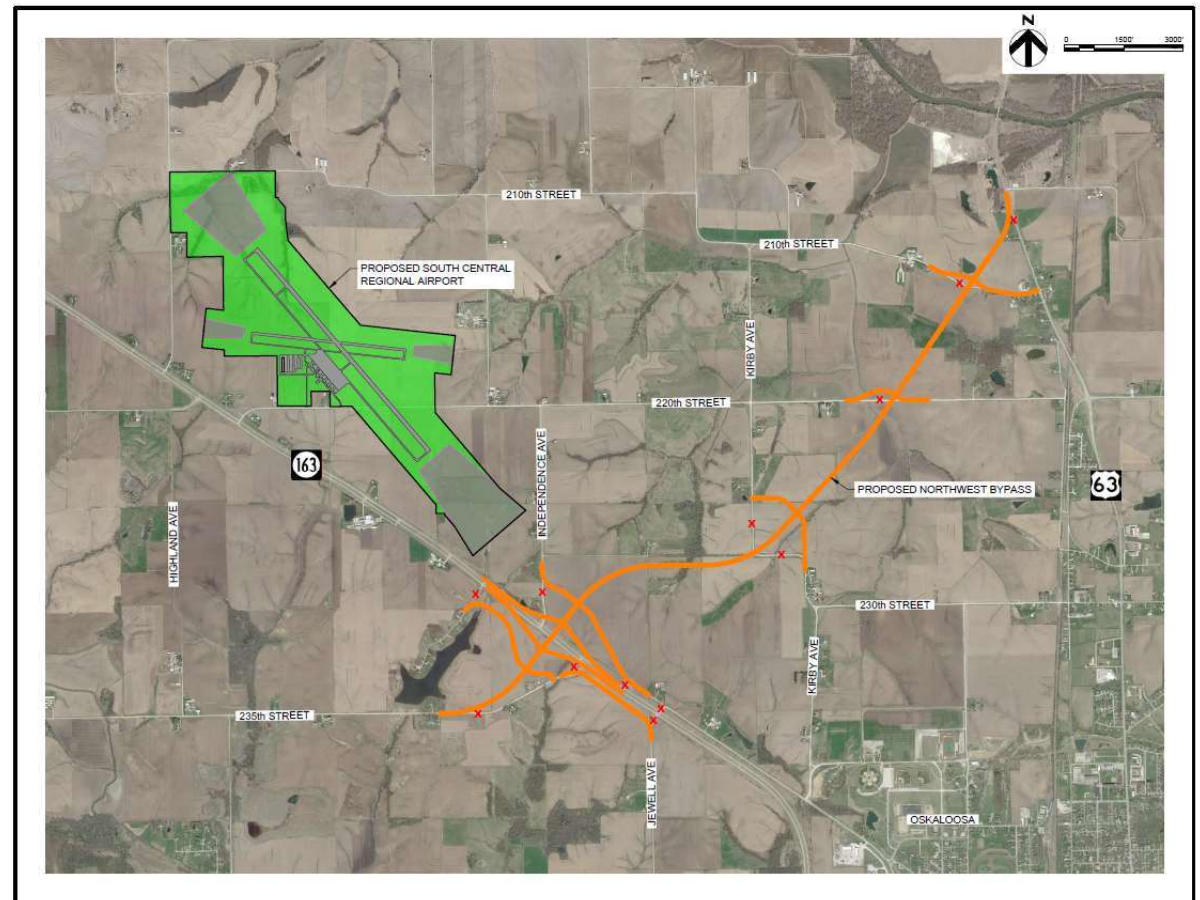


Map of the Regional Airport & U.S. 63 Northwest Bypass

- To-date, 378 acres of the land needed for the regional airport have been acquired
- The project is currently on hold awaiting direction from the City of Oskaloosa and the City of Pella.



PROPOSED SOUTH CENTRAL REGIONAL AIRPORT AND NORTHWEST BYPASS
MAHASKA COUNTY, IOWA