

# Project Overview

- Site Selection
  - Search Area
  - Candidate Sites
  - Sites A, B, and C
  - Preferred Site: Site A Recommended
    - Decision Point
  - Preliminary Report to FAA Sept 2013
  - FAA Acceptance

# Airport Master Plan

- Existing Condition
- Aeronautical Forecast (FAA Approval Required)
- Facility Requirements
- Site Alternatives (Baseline: No Build)
- Airport Layout Plan (FAA Approval Required)
- Development Schedule/Capital Cost
- Financial Plan
- FAA Acceptance (June 2014- Dec. 2014)

# Environmental Assessment

- Purpose & Need
- Alternatives/Affected Environment
- Environmental Consequences
  - \*23 Impact Categories
- Draft EA, Public Hearing
- FAA Determination (Dec. 2014)

NOTES:

RUNWAY 14/32 (C-II)  
100'x6500'  
RW 32  
PA-CAT 1  
(Vis. Min. AC 150/5300-13A)  
PIR < 3/4 MILE (FAR Part 77)  
RW 14  
APV ≥ 3/4 MILE BUT < 1 MILE  
(Vis. Min. AC 150/5300-13A)  
C/NP > 3/4 MILE (FAR Part 77)  
RUNWAY 10/28 (B-II)  
75'x3900'  
RW 10  
NPA 1 MILE  
(Vis. Min. AC 150/5300-13A)  
C/NP (FAR Part 77)  
RW 28  
NPA 1 MILE  
(Vis. Min. AC 150/5300-13A)  
C/NP (FAR Part 77)

ESTABLISHED AIRPORT  
ELEVATION 850' AMSL



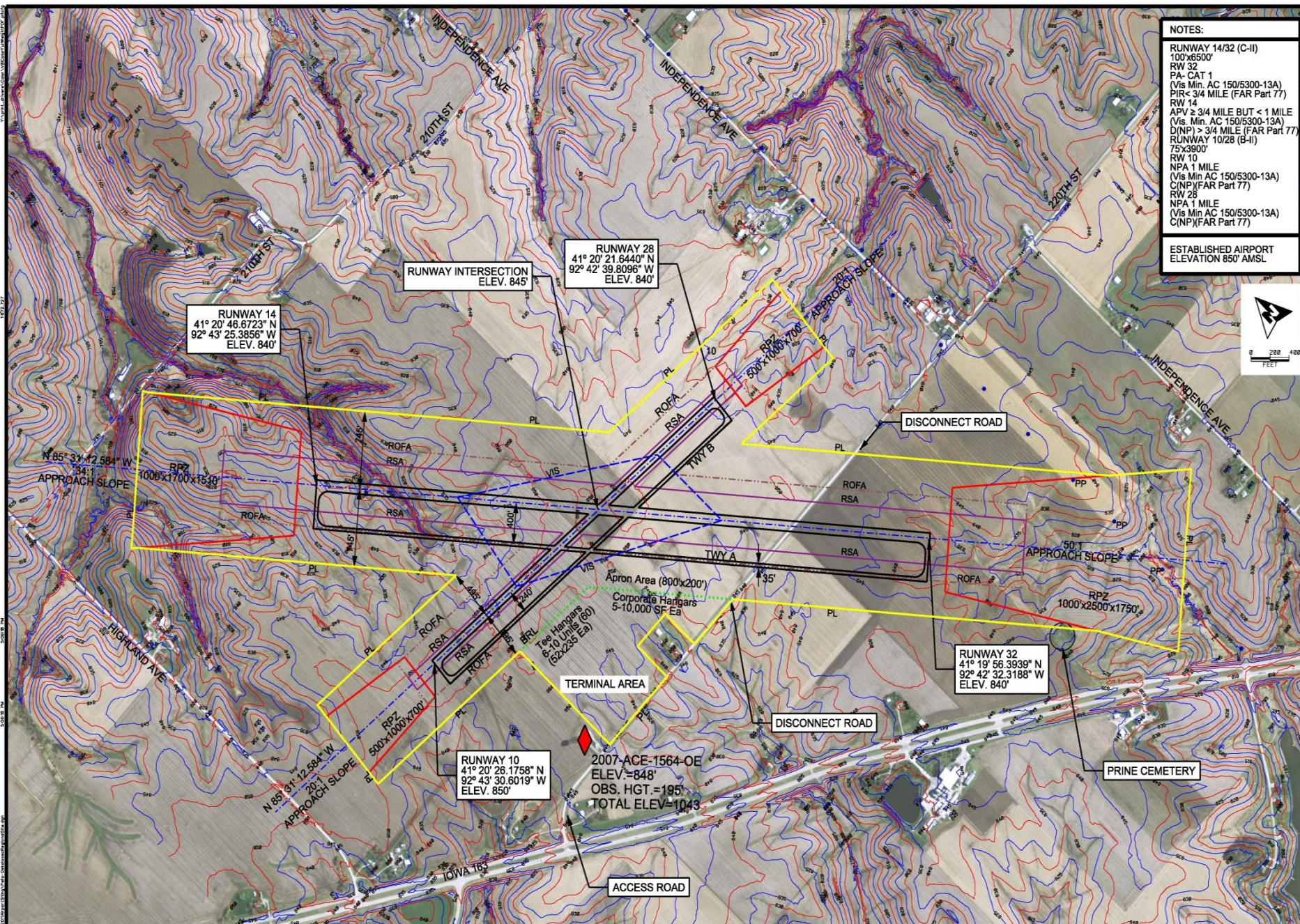
<div> <div>REVISION BLOCK</div> <div>DATE</div> <div>DATE</div> </div> <div> <div>1</div> <div>05/24/2013</div> <div>06/17/2013</div> </div>	<div> <div>SITE &amp; ALTERNATIVE 3</div> <div>AIRPORT DEVELOPMENT CONCEPT</div> </div>	<div>DESCRIPTION</div>	<div>PROJECT</div> <div>AIRPORT DEVELOPMENT CONCEPT</div>	<div>TITLE</div> <div>SOUTH CENTRAL REGIONAL AIRPORT AGENCY</div>	<div>OWNER</div> <div>Snyder &amp; Associates</div>	<div>2727 S.W. BAYVIEW BLVD.</div> <div>ANNANDALE, OHIO 44003</div> <div>516.984.8000</div>	<div>PROJECT NO.</div> <div>112.0865</div>	<div>DATE</div> <div>6-2013</div>	<div>1</div>	<div>1</div>	<div>1</div>
--	---	------------------------	---	---	---	---	--	-----------------------------------	--------------	--------------	--------------



**NOTES:**

RUNWAY 14/32 (C-II)  
 100'x6500'  
 RW 32  
 PA-CAT 1  
 (Vis Min. AC 150/5300-13A)  
 PIR< 3/4 MILE (FAR Part 77)  
 RW 14  
 APV ≥ 3/4 MILE BUT < 1 MILE  
 (Vis Min. AC 150/5300-13A)  
 (NP) > 3/4 MILE (FAR Part 77)  
 RUNWAY 10/28 (B-I)  
 75'x3900'  
 RW 10  
 NPA 1 MILE  
 (Vis Min AC 150/5300-13A)  
 C/NP (FAR Part 77)  
 RW 28  
 NPA 1 MILE  
 (Vis Min AC 150/5300-13A)  
 C/NP (FAR Part 77)

ESTABLISHED AIRPORT  
 ELEVATION 850' AMSL



PROJECT NUMBER 1	DATE 05/24/2013	SITE & ALTERNATIVE 2 AIRPORT DEVELOPMENT CONCEPT	DESCRIPTION	PROJECT AIRPORT DEVELOPMENT CONCEPT	PROJECT NO. 112.0865
APPROVED BY: _____				Snyder & Associates	
DATE APPROVED: _____				2727 S.W. DRYDEN BLVD. ANN ARBOR, MI 48106-1501 TEL: 734.769.1234 FAX: 734.769.1235	
SOUTH CENTRAL REGIONAL AIRPORT AGENCY				SHEET 1 OF 1	



PROPERTY INFORMATION					
PARCEL	PARCEL ID	APPROXIMATE SIZE ACRES	DEED HOLDER	COUNTY BOOK	RECORD PAGE
1	0628300007	20.14	Wohrli, Ronald J/Linda	253	221
2	0628400008	9.06	Wohrli, Ronald J/Linda	253	221
3	0632100008	40.34	Wohrli, Ronald J/Linda	253	221
4	0632200001	40.48	Wohrli, Ronald J/Linda	253	221
5	0632200004	40.48	VanHeulekom, T. Ernest Revocable Trust	276	500
6	0632200005	40.63	VanHeulekom, T. Ernest Revocable Trust	276	500
7	0633100004	19.68	VanHeulekom, T. Ernest Revocable Trust	276	500
8	0633300001	19.93	VanHeulekom, T. Ernest Revocable Trust	276	500
9	0633300002	20.31	Hasselmen, Homer/Doretha	252	248
10	0633300003	40.14	Hasselmen, Homer/Doretha	252	248
11	0633400007	39.78	Hasselmen, Homer/Doretha	252	248
12	0633400004	40.40	Hasselmen, Homer/Doretha	252	248
13	0633300005	40.17	Vos, Marion L/Dorothy A	287	480
14	1004200001	48.58	DeRied, John W/Dorothy A Revocable Trust	272	256
15	1004200003	62.77	VanZanen, James L	2010	3150
16	1004400004	40.12	Prime, David Miles	NA	NA
17	1004400002	34.59	Prime, David Miles	NA	NA
18	1004100006	75.26	Bernard, Elizabeth T Living Trust	2010	1010
19	1004100001	40.49	Rempel, Florence J/Donaldson Linda Leo/Schweidel	255	338
20	0633300004	40.07	Vos, Marion L/Dorothy A	287	480
21	0632400005	39.70	Rempel, Florence J/Donaldson Linda Leo/Schweidel	255	338
22	0632400002	40.68	Rempel, Florence J/Donaldson Linda Leo/Schweidel	255	338
23	0632400001	40.60	VanHeulekom, T. Ernest Revocable Trust	276	500
24	0632300004	39.30	VanHeulekom, T. Ernest Revocable Trust	276	500
25	0632200003	18.88	VanHeulekom, T. Ernest Revocable Trust	276	500
26	0632200002	20.75	Wohrli, Ronald J/Linda	253	221

NOTES:

RUNWAY 14/32 (C-II)  
100'x6500'  
RW 32  
FA-CAT 1  
(Vis Min AC 150/5300-13A)  
PIR < 3/4 MILE (FAR Part 77)  
RW 14  
APV ≥ 3/4 MILE BUT < 1 MILE  
(Vis Min AC 150/5300-13A)  
C/NPI > 3/4 MILE (FAR Part 77)  
RUNWAY 10/28 (E-II)  
75'x3900'  
RW 10  
NPA 1 MILE  
(Vis Min AC 150/5300-13A)  
C/NPI (FAR Part 77)  
RW 28  
NPA 1 MILE  
(Vis Min AC 150/5300-13A)  
C/NPI (FAR Part 77)

ESTABLISHED AIRPORT  
ELEVATION 850' AMSL

